

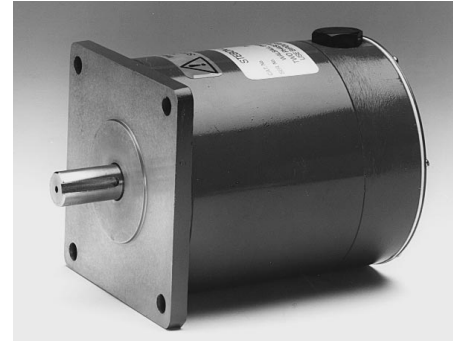
# 'S' SERIES Frame 1100

## Frame Reference SDT1100

Motors manufactured to STEBON 'S' Series frame 1100 are designed for high performance applications. A terminal box is incorporated into the NDE bracket. Motors are manufactured with 8 terminals for exclusive use with bipolar drives. The choice of 8 terminals provides for both series and parallel operation. The standard enclosure is to IP44. An alternative IP66 enclosure is also available.

### Specification

- Hybrid design.
- 1.8° Step angle (200 steps per rev).
- Unique two-phase winding for use with bipolar drives only.
- Class F insulation to IEC 60085 and BS2757.
- NEMA Size 42.
- Bearing loading, axial, 180N max.
- Bearing loading, radial, 330N max. (1101/2) 600N max. (1103)

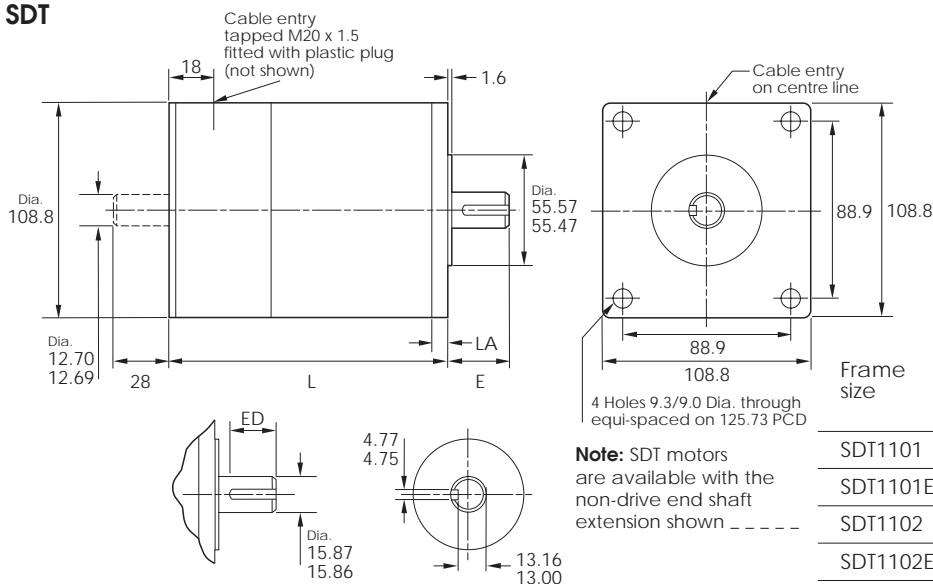


### Ratings

Frame reference	Maximum Holding Torque Nm	Maximum Detent Torque Nm	Bipolar Amps per phase Amps	Resistance per phase Ohms	Inductance per phase mH	Rotor Inertia kgcm <sup>2</sup>	Weight kg
SDT1101-550-47	5.0	0.12	4.7	0.55	6.6	3.65	4.8
SDT1101-350-60	5.0	0.12	6.0	0.35	4.0	3.65	4.8
SDT1101-250-70	5.0	0.12	7.0	0.26	2.8	3.65	4.8
SDT1101-150-90	5.0	0.12	9.0	0.15	1.7	3.65	4.8
SDT1102-300-75	9.0	0.20	7.5	0.26	5.0	7.50	8.0
SDT1102-180-94	9.0	0.20	9.4	0.18	3.2	7.50	8.0
SDT1102-150-105	9.0	0.20	10.5	0.14	2.6	7.50	8.0
SDT1102-125-115	9.0	0.20	11.5	0.11	2.2	7.50	8.0
SDT1102-100-130	9.0	0.20	13.0	0.10	1.8	7.50	8.0
SDT1103-230-100	13.0	0.30	10.0	0.21	4.2	11.50	11.0
SDT1103-150-120	13.0	0.30	12.0	0.14	2.9	11.50	11.0
SDT1103-120-150	13.0	0.30	15.0	0.12	1.9	11.50	11.0

### Dimensions (mm)

#### SDT



Frame size	E	ED	LA	L (IP44)	L (IP66)
SDT1101	32.0	28.5	8.4	136	159
SDT1101E	46.0	35.0	8.4	136	159
SDT1102	32.0	28.5	8.4	189	212
SDT1102E	46.0	35.0	8.4	189	212
SDT1103	32.0	28.5	13.3	247	270
SDT1103E	46.0	35.0	13.3	247	270