

'F' SERIES Frame 850

Frame Reference FDL850 and FDT850

Motors manufactured to STEBON 'F' Series frame 850 are available in three basic enclosures:

- o FDL motors are the common flying lead design with 8 leads out and manufactured to IP22 rating.
- o FDT motors have a terminal box incorporated into the NDE bracket. The standard enclosure is to IP44. An alternative IP66 enclosure is also available.

Specification

- o Hybrid design.
- o 1.8° Step angle (200 steps per rev).
- o 4-phase bifilar winding.
- o Class B insulation to IEC 60085 and BS2757.
- o NEMA Size 34.
- o Bearing loading, axial, 160N max.
- o Bearing loading, radial, 250N max.

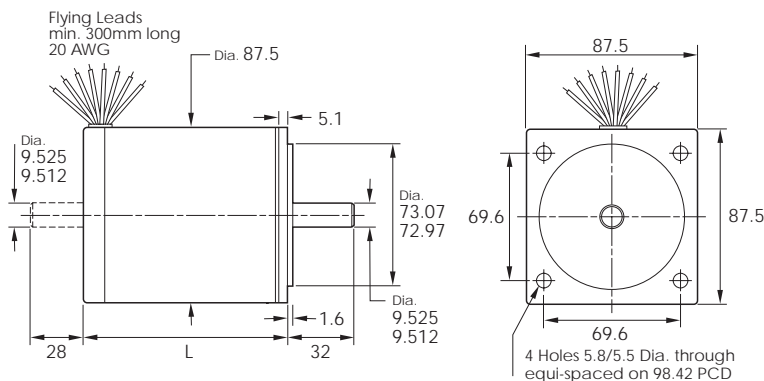


Ratings

Frame reference	Maximum Holding Torque Nm	Maximum Detent Torque Nm	Unipolar Amps per phase Amps	Resistance per phase Ohms	Inductance per phase mH	Rotor Inertia kgcm ²	Weight kg
FDL/FDT851-1700-17	1.2	0.03	1.7	1.58	5.0	0.60	2.2
FDL/FDT851-500-32	1.2	0.03	3.2	0.49	1.5	0.60	2.2
FDL/FDT852-2400-22	2.6	0.04	2.2	2.42	12.2	1.25	3.2
FDL/FDT852-750-40	2.6	0.04	4.0	0.73	3.5	1.25	3.2
FDL/FDT853-750-40	4.0	0.05	4.0	0.77	3.8	2.00	4.0
FDL/FDT853-400-60	4.0	0.05	6.0	0.41	2.1	2.00	4.0
FDL/FDT853-300-75	4.0	0.05	7.5	0.33	1.6	2.00	4.0
FDL/FDT853-250-85	4.0	0.05	8.5	0.26	1.3	2.00	4.0

Dimensions (mm)

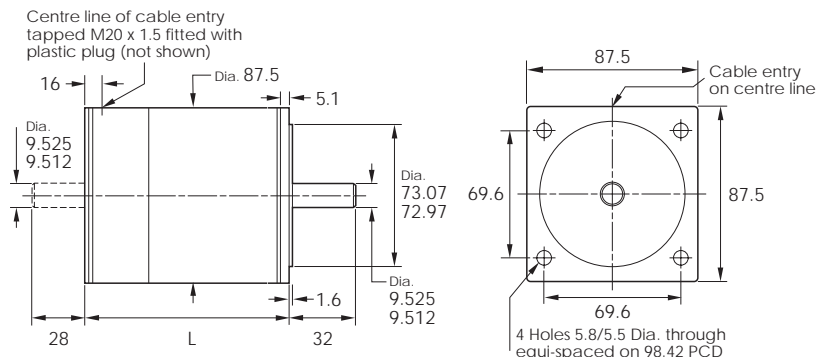
FDL



Frame size	L (IP22)
FDL851	73
FDL852	105
FDL853	138

Note: FDL motors are available with the non-drive end shaft extension shown - - - -

FDT



Frame size	L (IP44)	L (IP66)
FDT851	98	117
FDT852	131	149
FDT853	163	182

Note: FDT motors are available with the non-drive end shaft extension shown - - - -