

# STEBON BRAKE MOTORS

## Fail-Safe Operation

STEBON brake motors are fitted with a compact fail-safe brake. The brake operates in such a way that whilst power is applied to the motor an electromagnetic force acts against a spring mechanism, releasing the disc brake. When electrical power is removed the spring then applies the brake and provides a holding torque

to the load. The presence of this torque holds the load in position. Electrical connections to both the motor and brake can be made by either a single multipole connector or separate sets of flying leads. A manual release is also available.



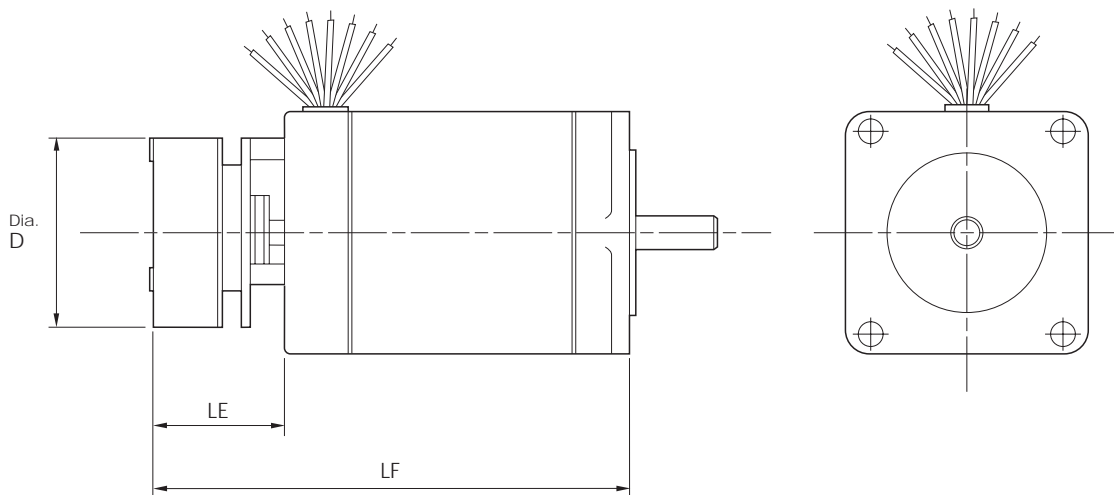
## Specification

Brake Size	Input Voltage DC Volts	Current DC Amps	Rated torque Nm	Used on
10	24	0.9	0.3	Frame 600
20	24	0.8	5.0	Frame 850/1100

## Dimensions (mm)

Dimensions are as standard FDL types except as modified in table.

### Frame L600



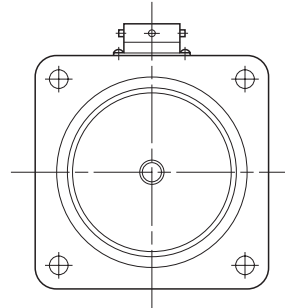
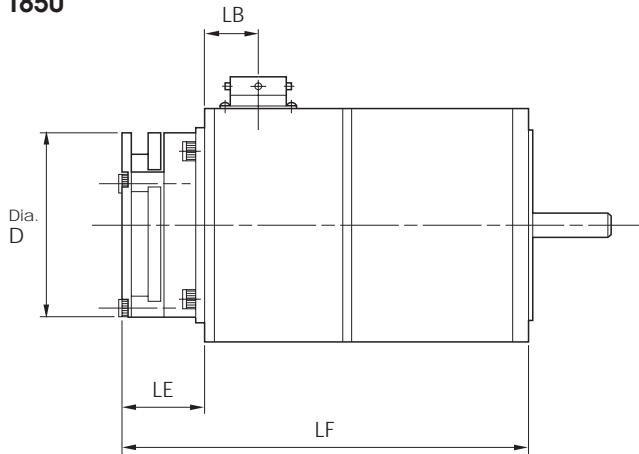
Frame size	LF	LE	D
601	72	34	45
602	85	34	45
603	116	34	45
604	135	34	45

# STEBON BRAKE MOTORS

## Dimensions (mm)

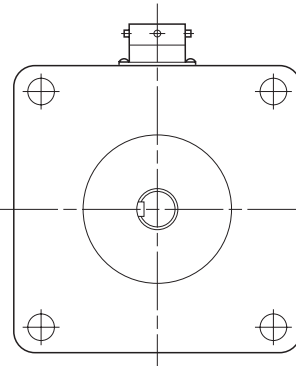
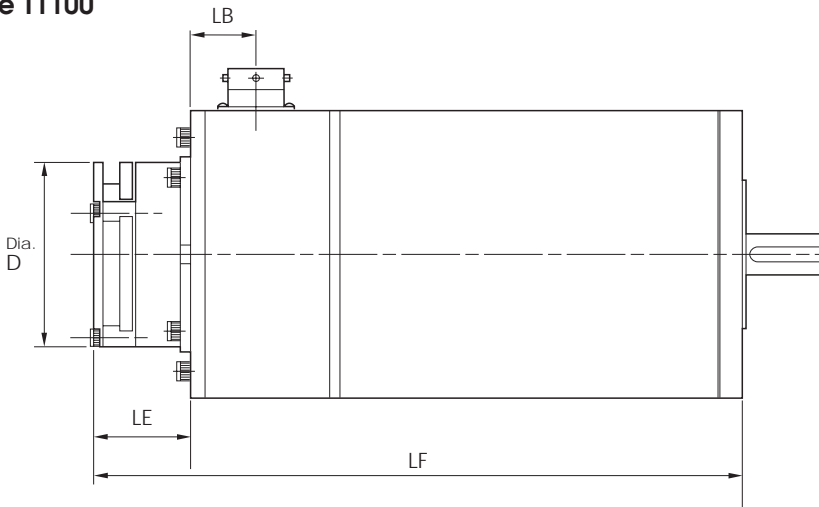
Dimensions are as standard SDT types except as modified in tables

### Frame T850



Frame size	LF	LE	LB	D
851	135	36	19	70
852	167	36	19	70
853	200	36	19	70

### Frame T1100



Frame size	LF	LE	LB	D
1101	173	36	19	70
1102	226	36	19	70
1103	284	36	19	70